



Whilst every effort is made to give a fair description, the accuracy of these particulars is not guaranteed, neither do they constitute an offer or contract.

MATHESONS ESTATE AGENTS have not tested any apparatus, equipment, fitting or services and so cannot verify that they are in working order. The buyer is advised to obtain verification from their solicitor or surveyor. Measurements are correct to within +/- 6 A sonic tape is used. None of the statements contained in these particulars or any of our properties are to be relied upon as a representation of fact.

166 Manor Park Road
Harlesden
London
NW10 4JT
T: 020 8965 2250
E: sales@mathesonsestates.com
www.mathesonsestates.com



Shaftesbury Gardens, London, NW10 6LP

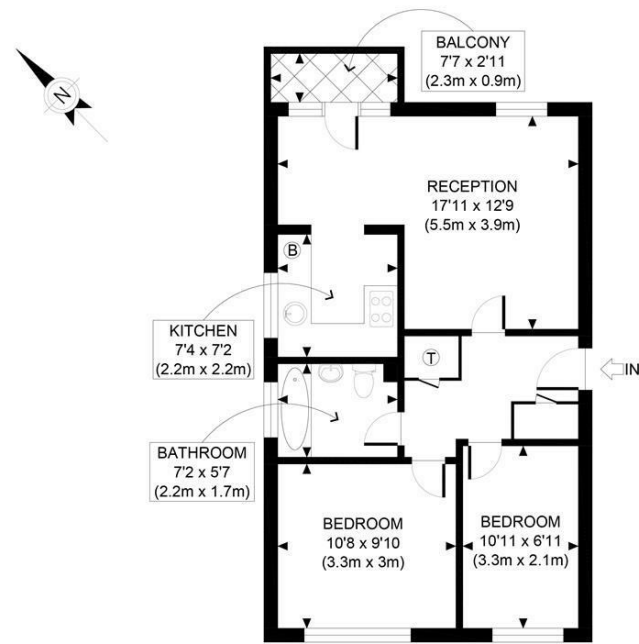
£389,950



KEY FEATURES:

- First Floor Flat
- Two bedrooms
- 17ft 'L' Shaped Reception
- Kitchen fitted to three sides
- Balcony
- Reserved Car Parking Space
- Communal Gardens
- Long Lease

A superb newly decorated two bedroom first floor purpose built flat with private balcony and reserved car parking space. Accommodation provides 552sqft/51sqm of floorspace and comprises via entryphone, entrance hall, 17ft 'L' shaped reception room with door to private balcony, fully fitted kitchen, two bedrooms and bathroom. The property further benefits communal gardens and a lease in excess of 950 years. Shaftesbury Gardens is a quiet residential development which is close to both North Acton Central Line and Willesden Junction Overground and Bakerloo Stations.



FIRST FLOOR
GROSS INTERNAL
FLOOR AREA 552 SQ FT

APPROX. GROSS INTERNAL FLOOR AREA 552 SQ FT / 51 SQM

Ref: Copyright photoplan

Disclaimer: Floor plan measurements are approximate and are for illustrative purposes only. While we do not doubt the floor plan accuracy and completeness, you or your advisors should conduct a careful, independent investigation of the property in respect of monetary valuation

